

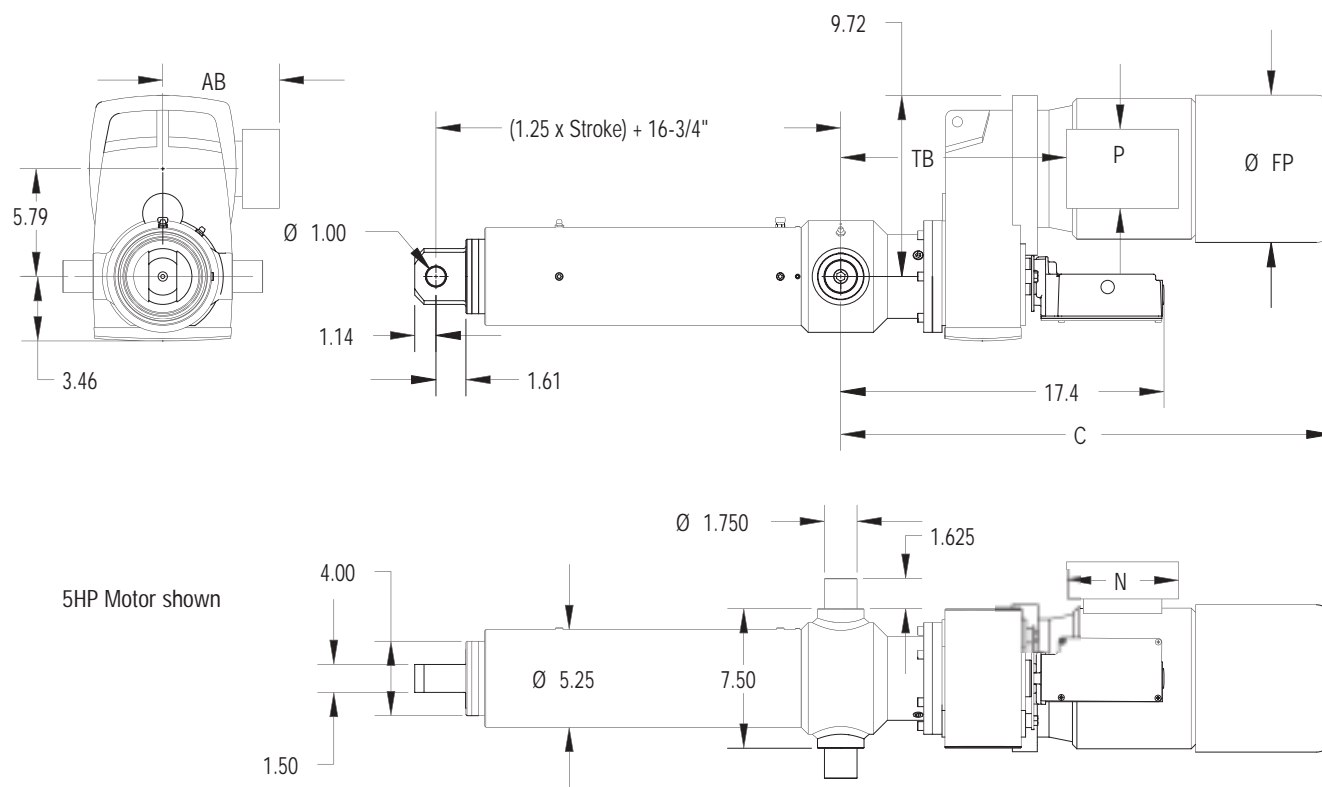
Specifications

Maximum Capacity	12 Tons
Maximum Speed	188.5 in/min
Temperature Range	-15° to 140° F (-29° to 60° C)
Construction	Steel trunnion housing, and thin dense nodular chrome plated translating tubes. The translating tubes feature hydraulic cylinder grade wiper seals, and are guided at both ends by polymeric bearings.
Power	Standard brake motors use Class F insulation with Class B rise (1.15 S.F.) All brake motors are totally enclosed, fan cooled. IP66 or wash-down motors are available. Standard brake motors are UL, CSA, or CE marked, depending on voltage. Heidenhain Incremental Motor Encoder option available.
Mounting	Trunnion
Load Screw	2.25 x .50 Ball Screw
Limit Switches	Independently adjustable. Traveling nut style for best repeatability and setting ease. CAM type limits switches are used on Parallel configurations.

Product Specifications and Dimensions

SCN12 Series

Series	Model	Capacity (lbs.)	Speed (in/min)	Std. HP	Max Stroke (inches)	Screw Life (million in.)
SCN12	NZ12-0451	9305	188.5	5	110.0	12.0
	NZ12-0572	11802	148.6	5	110.0	5.9
	NZ12-0643	13267	132.2	5	110.0	4.1
	NZ12-0748	15433	113.6	5	110.0	2.6
	NZ12-0837	17270	101.6	5	110.0	1.9
	NZ12-0903	18631	94.1	5	107.0	1.5
	NZ12-1015	20942	83.7	5	101.0	1.1
	NZ12-1181	14620	72.0	3	110.0	3.1
	NZ12-1323	16378	64.2	3	110.0	2.2
	NZ12-1653	20464	51.4	3	102.0	1.1
	NZ12-1851	15277	45.9	2	110.0	2.7
	NZ12-2190	18074	38.8	2	109.0	1.6
	NZ12-2396	19774	35.5	2	104.0	1.3
	NZ12-2497	20608	34.0	2	102.0	1.1
	NZ12-2683	16607	31.7	1.5	110.0	2.1
	NZ12-2965	18353	28.7	1.5	108.0	1.6
	NZ12-3123	19331	27.2	1.5	105.0	1.3
	NZ12-3654	22618	23.3	1.5	97.0	0.8
	NZ12-3718	15343	22.9	1	110.0	2.7
	NZ12-4511	18615	18.8	1	108.0	1.5
	NZ12-5396	22267	15.8	1	98.0	0.9
	NZ12-6383	24000	13.3	1	89	0.7
	NZ12-6967	24000	12.2	1	85	0.7
	NZ12-8242	24000	10.3	0.75	91	0.7
	NZ12-10098	24000	8.4	0.75	81	0.7
	NZ12-10407	24000	8.2	0.75	80	0.7
	NZ12-12751	24000	6.7	0.5	89	0.7
	NZ12-13186	24000	6.4	0.5	88	0.7
	NZ12-14996	24000	5.7	0.5	82	0.7
	NZ12-18511	24000	4.6	0.33	91	0.7
	NZ12-23611	24000	3.6	0.33	80	0.7
	NZ12-27627	24000	3.1	0.25	85	0.7



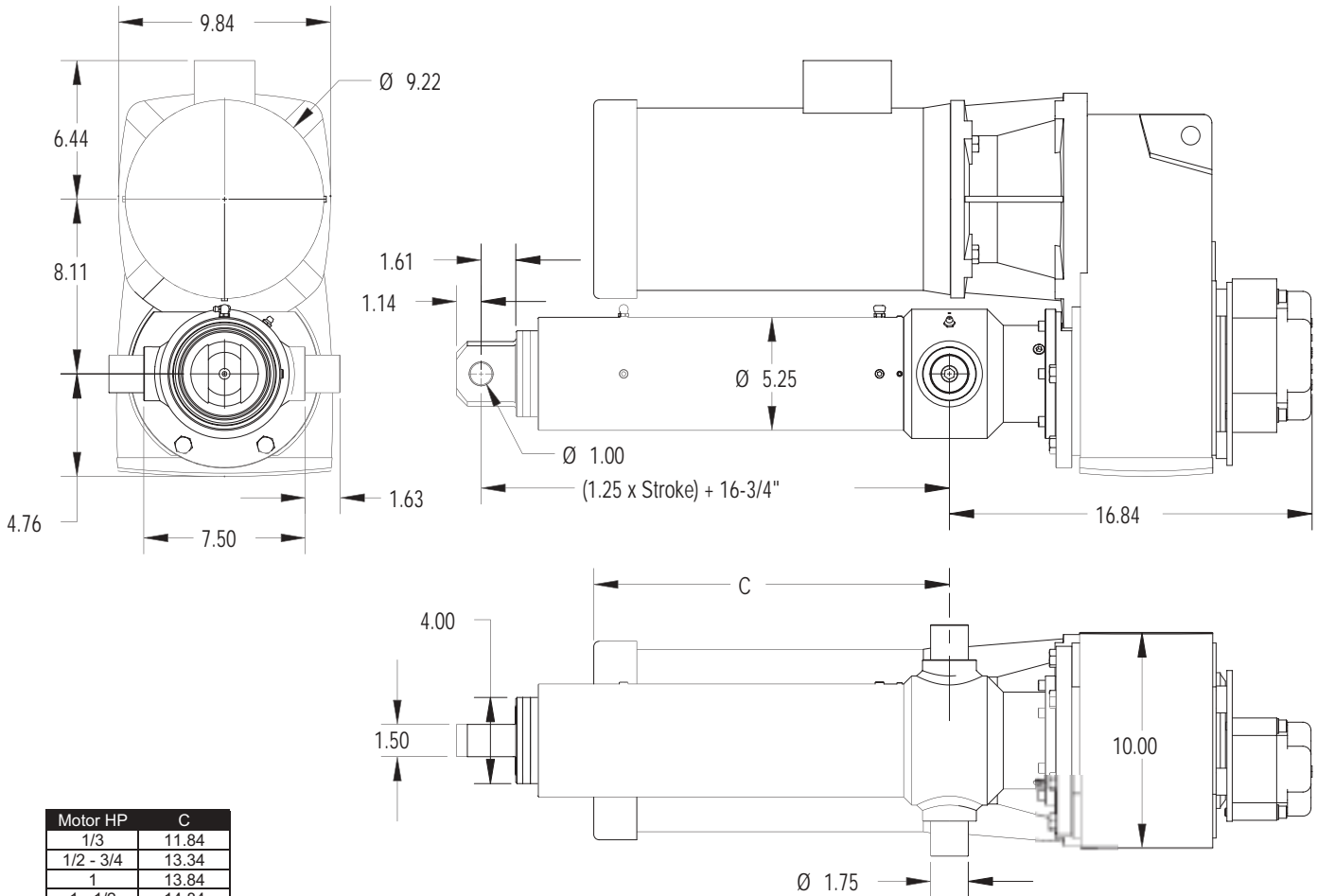
5HP Motor shown

Motor HP	C	FP	AB	TB	N	P
.33 - .50	25.84	5.71	5.24	11.62	5.2	3.43
.75 - 1.0	25.92	6.5	5.63	11.7	6.02	4.25
1.5 - 2.0	26.11	7.2	5.83	11.9	6.02	4.25
3.0 - 5.0	26.35	7.91	6.26	12.13	6.02	4.25

Important: See page 9 for mounting position code.



Series	Model	Capacity (lbs.)	Speed (in/min)	Std. HP	Max Stroke (inches)	Screw Life (million in.)
SCN12	NU12-0470	9697	180.9	5	110.0	10.6
	NU12-0500	10316	170.0	5	110.0	8.8
	NU12-0543	11204	156.5	5	110.0	6.9
	NU12-0606	12503	140.3	5	110.0	4.9
	NU12-0713	14711	119.2	5	110.0	3.0
	NU12-0823	17187	102.0	5	110.0	1.9
	NU12-0923	19044	92.1	5	106.0	1.4
	NU12-1085	13432	78.3	3	110.0	4.0
	NU12-1268	15697	67.0	3	110.0	2.5
	NU12-1520	18817	55.9	3	107.0	1.5
	NU12-1818	15004	46.8	2	110.0	2.9
	NU12-2145	17703	39.6	2	110.0	1.7
	NU12-2239	18479	38.0	2	108.0	1.5
	NU12-2625	21664	32.4	2	99.0	1.0
	NU12-2643	16360	32.2	1.5	110.0	2.2
	NU12-3234	20018	26.3	1.5	103.0	1.2
	NU12-3681	22785	23.1	1.5	96.0	0.8
	NU12-4074	16812	20.9	1	110.0	2.0
	NU12-4505	18590	18.9	1	108.0	1.5
	NU12-9052	24000	9.4	0.75	86.0	0.7
NU12-11078	22857	7.7	0.5	96.0	0.8	
NU12-15540	21162	5.5	0.33	100	1.0	



Important: See page 9 for mounting position code.

For additional assistance, contact our Application Engineers at (800) 477-5002.

Product Specifications and Dimensions

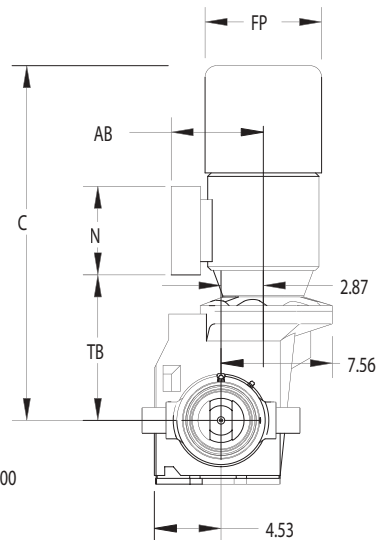
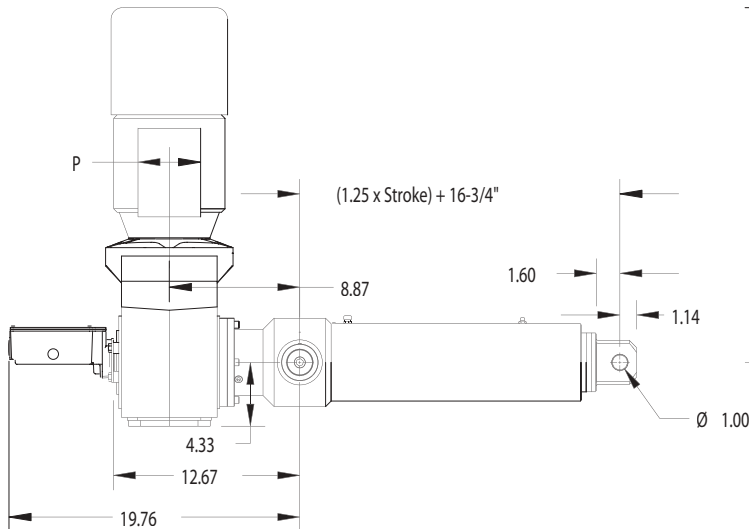
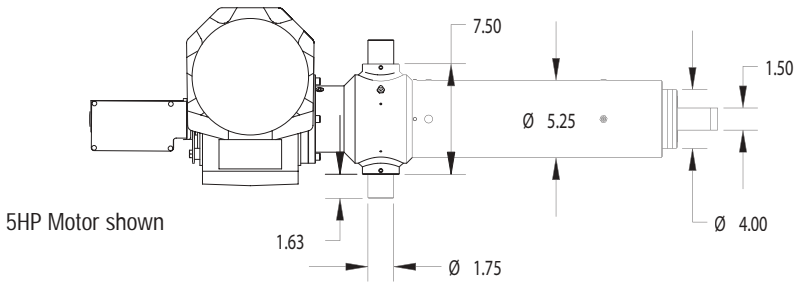
SCN12 Series

Series	Model	Capacity (lbs.)	Speed (in/min)	Std. HP	Max Stroke (inches)	Screw Life (million in.)
SCN12	NL12-0481	14887	176.7	7.5	110.0	2.9
	NL12-0543	16805	156.5	7.5	110.0	2.0
	NL12-0611	18910	139.1	7.5	107.0	1.4
	NL12-0641	19838	132.6	7.5	104.0	1.2
	NL12-0760	15681	111.8	5	110.0	2.5
	NL12-0855	17641	99.4	5	110.0	1.8
	NL12-0963	19869	88.3	5	104.0	1.2
	NL12-1088	13469	78.1	3	110.0	4.0
	NL12-1243	15388	68.4	3	110.0	2.7
	NL12-1391	17220	61.1	3	110.0	1.9
	NL12-1560	19312	54.5	3	105.0	1.3
	NL12-1783	14715	47.7	2	110.0	3.0
	NL12-1973	16283	43.1	2*	110.0	2.2
	NL12-2222	18338	38.3	2*	108.0	1.6
	NL12-2539	20955	33.5	2*	101.0	1.1
	NL12-2844	27604	29.9	1.5*	110.0	0.5
	NL12-3204	19832	26.5	1.5	104.0	1.2
	NL12-3661	22661	23.2	1.5	97.0	0.8
	NL12-4077	16824	20.8	1	110.0	2.0
	NL12-4593	18953	18.5	1	106.0	1.4
NL12-5248	21656	16.2	1	99.0	1.0	
NL12-5602	23117	15.2	1	96	0.8	
NL12-6401	19811	13.3	0.75	104	1.2	

Horsepowers with asterisks are NEMA C-face motors.



Motor HP	C	FP	AB	TB	N	P
.75 - 1.0	19.76	6.5	5.63	9.45	6.02	4.25
1.5 - 2.0	22.32	7.2	5.83	9.64	6.02	4.25
3.0 - 5.0	24.13	7.91	6.26	9.88	6.02	4.25



Important: See page 9 for mounting position code.